



mod light group

ML17A

Infrared Motion Sensor



Instruction

MOD-LIGHT Group d.o.o.

Ferde Hauptmana br. 7, 71000 Sarajevo

ID: 4202061280002

Tekući račun: 1027080000000542 Union Banka DD Sarajevo

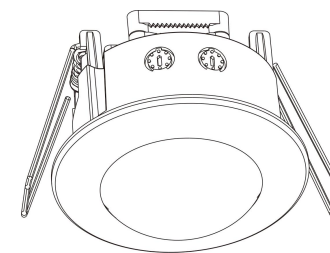
Telefon: 061/507 080 065/612 084

e-mail: mlgroupdoo@gmail.com www.mlgroup.ba

Welcome to use infrared motion sensor!

The product adopts good sensitivity detector, integrated circuit. It gathers automatism, convenient safe, saving-energy and practical functions. It utilizes the infrared energy from human as control-signal source, it can start the load at once when one enters detection field.

It can identify day and night automatically. It is easy to install and used widely.



SPECIFICATION:

Power Sourcing: 220-240V/AC

Power Frequency: 50/60Hz

Ambient Light: <10-2000LUX (Adjustable)

Time-Delay: min.10sec±3sec

Max.7min±2min

Rated Load:1200W

300W LED

Detection Range: 360°

Working Temperature: -20~+40°C

Working Humidity: <93%RH

Installing Height: 2.2-4m

Power Consumption: approx 0.5W

Detection Motion Speed: 0.6-1.5m/s

FUNCTION:

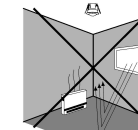
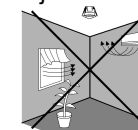
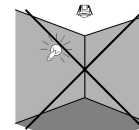
- Can identify day and night: The consumer can adjust working state in different ambient light. It can work in the daytime and at night when it is adjusted on the "sun" position (max). It can work in the ambient light less than 10LUX when it is adjusted on the "-" position (min). As for the adjustment pattern, please refer to the testing pattern.
- Time-Delay is added continually: When it receives the second induction signals within the first induction, it will restart to time from the moment.



INSTALLATION ADVICE:

As the detector responds to changes in temperature, avoid the following situations:

- Avoid pointing the detector towards objects with highly reflective surfaces, such as mirrors etc.
- Avoid mounting the detector near heat sources, such as heating vents, air conditioning units, light etc.
- Avoid pointing the detector towards objects that may move in the wind, such as curtains, tall plants etc.



CONNECTION:

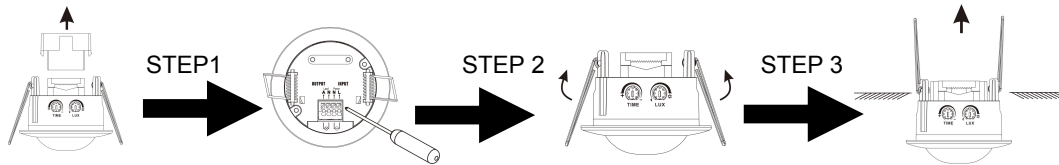


WARNING

Warning. Danger of death through electric shock!

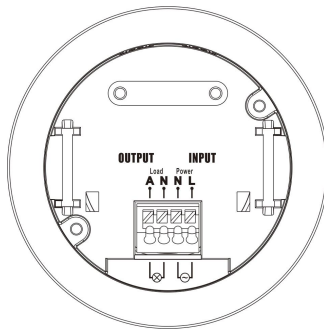
- Must be installed by professional electrician.
- Disconnect power source.
- Cover or shield any adjacent live components.
- Ensure device cannot be switched on.
- Check power supply is disconnected.

- Unload the transparent vinyl cover which is at the bottom of the sensor.
- Loose the screws in the connection terminal, and then connect the power to connection terminal of sensor according to connection-wire diagram.
- Install back the transparent vinyl cover into the original location.
- Fold the metal spring of the sensor upwards, until they are in "I" position with sensor, and then put the sensor into the hole or installation box which is on the ceiling and has the similar size with the sensor. Releasing the spring, the sensor will be set in this installation position.
- After finishing installing, turn on the power and then test it.

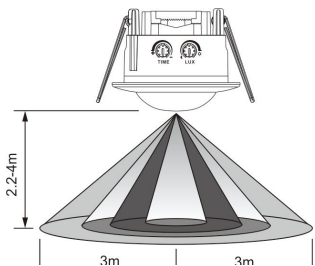


CONNECTION-WIRE DIAGRAM:

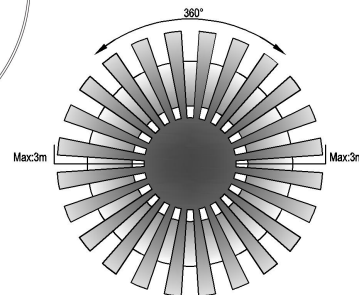
(See the right figure)



SENSOR INFORMATION:

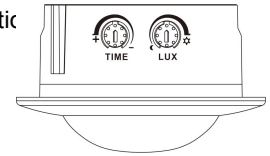


Height of installation: 2.2-4m



TEST:

Detectic



- Turn the TIME knob anti-clockwise on the minimum (10s). Turn the LUX knob clockwise on the maximum (sun).
- Switch on the power; the sensor and its connected lamp will have no signal at the beginning. After Warm-up 30sec, the sensor can start work. If the sensor receives the induction signal, the lamp will turn on. While there is no another induction signal any more, the load should stop working within 10sec±3sec and the lamp would turn off.
- Turn LUX knob anti-clockwise on the minimum (-). If the ambient light is more than 3LUX, the sensor would not work and the lamp stop working too. If the ambient light is less than 10LUX (darkness), the sensor would work. Under no induction signal condition, the sensor should stop working within 10sec±3sec.

Note: when testing in daylight, please turn LUX knob to ☀ (SUN) position, otherwise the sensor lamp could not work! If the lamp is more than 60W, the distance between lamp and sensor should be 60cm at least.

SOME PROBLEM AND SOLVED WAY:

- The load does not work:
 - Please check if the connection of power source and load is correct.
 - Please check if the load is good.
 - Please check if the settings of working light correspond to ambient light.
- The sensitivity is poor:
 - Please check if there is any hindrance in front of the detector to affect it to receive the signals.
 - Please check if the ambient temperature is too high.
 - Please check if the induction signal source is in the detection field.
 - Please check if the installation height corresponds to the height required in the instruction.
 - Please check if the moving orientation is correct.
- The sensor can not shut off the load automatically:
 - Please check if there is continual signal in the detection field.
 - Please check if the time delay is set to the maximum position.
 - Please check if the power corresponds to the instruction.